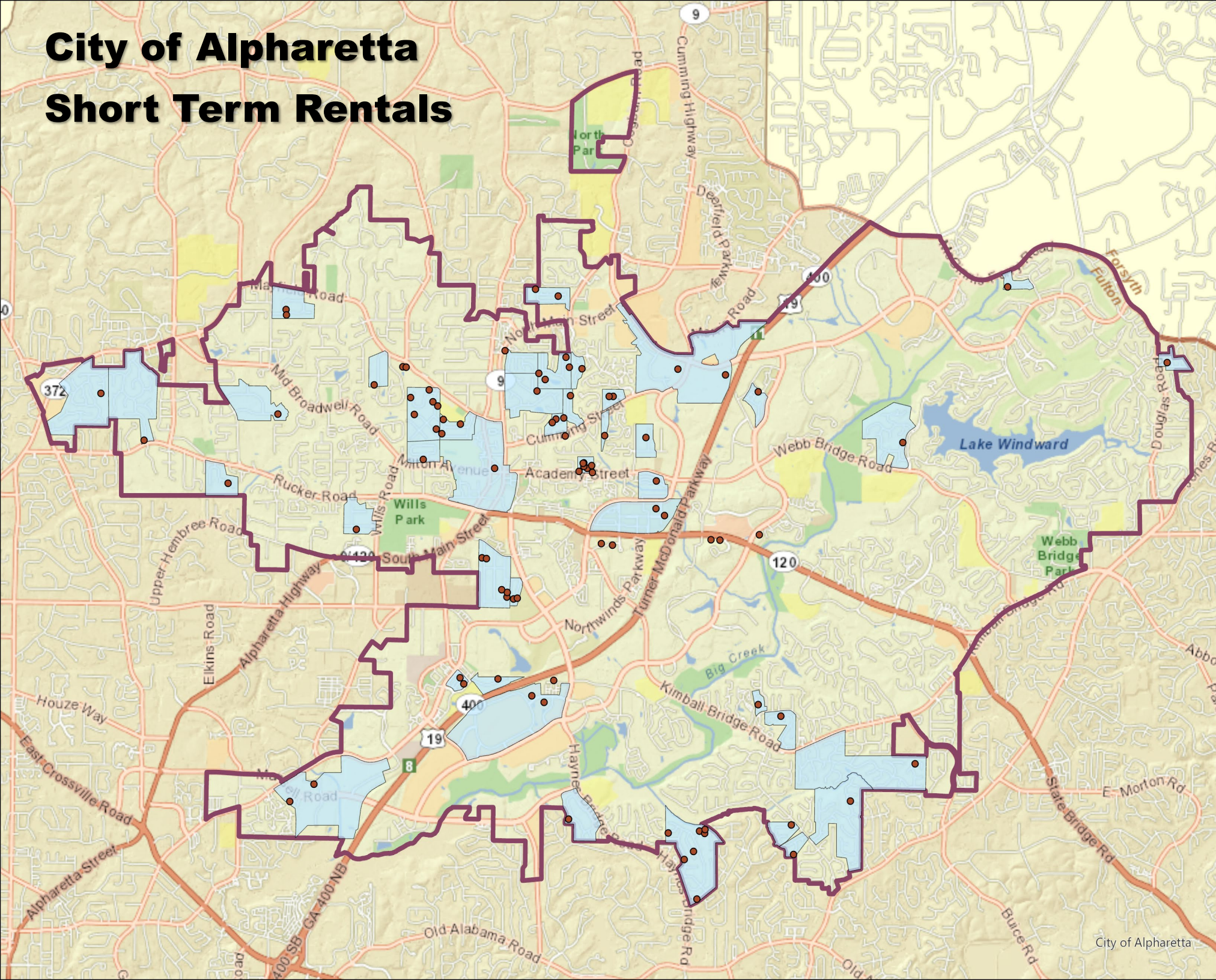


City of Alpharetta

Short Term Rentals



Subdivision	# STRs	Total Lots	% STR
Village Green	7	52	13.5%
Jackson Lake	4	58	6.9%
Coldridge Forest	8	118	6.8%
Milton Estates	6	94	6.4%
Dania Hills	1	17	5.9%
Meadow Brook Hills	3	57	5.3%
Henderson Village	1	22	4.5%
Crabapple Trace	2	50	4.0%
Hillcrest	1	28	3.6%
Vantage Point	2	56	3.6%
Alpha Park	5	141	3.5%
Sterling Heights	1	31	3.2%
Wood Brooke East	1	34	2.9%
Crabapple Chase	1	35	2.9%
Eastwood	1	37	2.7%
Milton Manor	1	41	2.4%
Woodbrooke	1	41	2.4%
Westwood Park	2	88	2.3%
Gatewood	2	92	2.2%
Selbridge Mill	1	47	2.1%
Arrowood	1	48	2.1%
Calumet	1	48	2.1%
Charlotte Estates	1	48	2.1%
Dunmoor	1	52	1.9%
Berkshire Manor	6	329	1.8%
Planters Ridge	2	124	1.6%
Winthrop Park	1	72	1.4%
Summerfield	1	77	1.3%
Kimball Point	1	81	1.2%
The Artisan	1	94	1.1%
Preserve at North Pointe	1	112	0.9%
Bluffs	1	136	0.7%
Mannings Ridge	1	151	0.7%
Caravelle at Woodward Park	1	187	0.5%
Woodlands at Webb Bridge	1	209	0.5%
Northfarm	1	251	0.4%
Tuxford	1	375	0.3%

Subdivision	# STRs	Total Lots	% STR
Village Green	7	52	13.5%
Jackson Lake	4	58	6.9%
Coldridge Forest	8	118	6.8%
Milton Estates	6	94	6.4%
Dania Hills	1	17	5.9%
Meadow Brook Hills	3	57	5.3%
Henderson Village	1	22	4.5%
Crabapple Trace	2	50	4.0%
Hillcrest	1	28	3.6%
Vantage Point	2	56	3.6%
Alpha Park	5	141	3.5%
Sterling Heights	1	31	3.2%
Wood Brooke East	1	34	2.9%
Crabapple Chase	1	35	2.9%
Eastwood	1	37	2.7%
Milton Manor	1	41	2.4%
Woodbrooke	1	41	2.4%
Westwood Park	2	88	2.3%
Gatewood	2	92	2.2%
Selbridge Mill	1	47	2.1%
Arrowood	1	48	2.1%
Calumet	1	48	2.1%
Charlotte Estates	1	48	2.1%
Dunmoor	1	52	1.9%
Berkshire Manor	6	329	1.8%
Planters Ridge	2	124	1.6%
Winthrope Park	1	72	1.4%
Summerfield	1	77	1.3%
Kimball Point	1	81	1.2%
The Artisan	1	94	1.1%
Preserve at North Pointe	1	112	0.9%
Bluffs	1	136	0.7%
Mannings Ridge	1	151	0.7%
Caravelle at Windward Park	1	187	0.5%
Woodlands at Webb Bridge	1	209	0.5%
Northfarm	1	251	0.4%
Tuxford	1	375	0.3%